



## 16 CH PoE NVR SPEC



### Product Technical Description

- The new UI is convenient and easy to use, and supports functions such as automatic addition and cross-segment addition;
- The camera can automatically reconnect after changing its IP address;
- Support amplifier speakers and 3.5mm audio interface;
- Support cloud upgrade function;
- Support human body/ human body face detection function, Support Vehicle detection function;
- Support intelligent playback of human body, faces and vehicle models;
- Support simultaneous display of VGA and HDMI, HDMI maximum resolution supports 2K;
- Can be connected to 16 channels of 5MP cameras;
- Support HDMI output audio;
- Support network and USB backup function, backup can be accurate to the second;
- Support the function of controlling the image parameters of the front-end camera;
- Support Onvif protocol;



## 16 CH PoE NVR SPEC

- Support the function of controlling the image parameters of the front-end camera (private agreement);
- Support Easy VMS software remote monitoring and playback;
- The mobile phone can use P6SLite software to remotely monitor and replay the video;
- Use the P6SLite mobile software to scan the code to log in locally.

## Product Parameters

<b>System</b>	Processor	HiSilicon
	Operating System	Embedded LINUX Operating System
<b>Interface</b>	Operation Interface	Graphical operation interface, support mouse operation
	Screen Display	1/4/6/9/16 screen
<b>Video</b>	Video Input	4 / 9 CH // 5MP ( Dual stream input )
	Video Frame	30fps/25fps
	Video Output	VGA*1 ( 1080P ) , HDMI*1 ( 2K )
	Image Decoding	H.264/H.265
	Area Mask	Support (requires camera support)
	Motion Detection	Support (requires camera support)
<b>Smart Function</b>	AI alarm	Support humanoid + face detection function + Vehicle detection function , linkage push, big screen alarm function (need to access human figure + face detection module)
	AI playback	Support AI playback function, Vehicle playback, playback is more accurate
<b>Audio</b>	Voice alarm	The front-end alarm voice can be set (the camera needs to support the alarm voice prompt)
	Audio Compression	G.711U / G.711A / G.726
	Audio Input	According to the number of channels 1: 1 network audio input
	Audio Output	Support HDMI audio output, 1.25mm seat connected to speaker sound output
<b>Record and Playback</b>	Record Mode	Timing> Motion> Manual >Intelligent
	Playback Channels	1ch 5MP/2ch 4MP/4ch 3MP
	Playback Mode	Time bar playback, Browse playback, Smart playback, Event retrieval



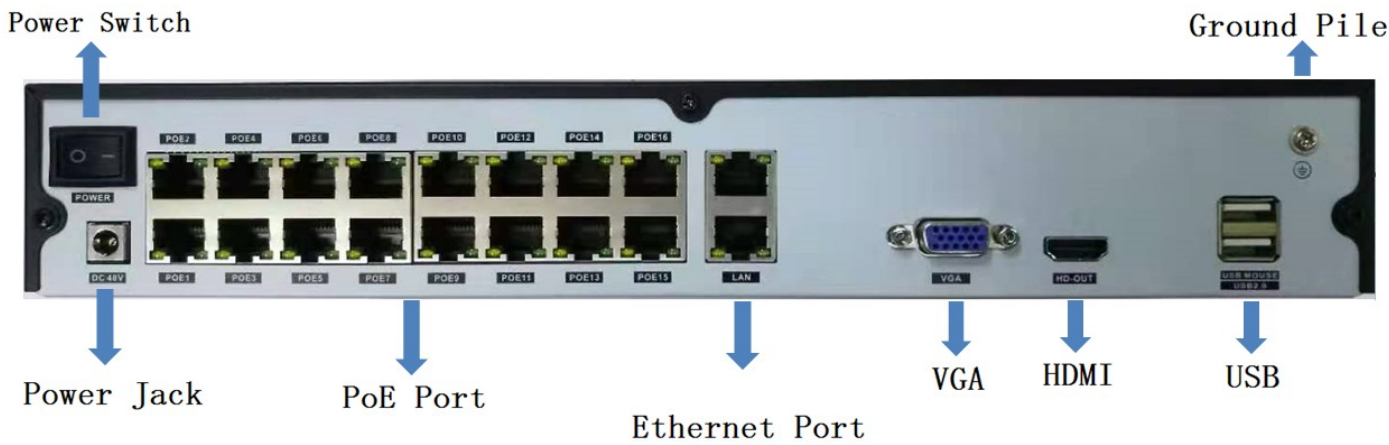
## 16 CH PoE NVR SPEC

<b>Storage Backup</b>	Record Save	Hard disk, Network (Easy VMS remote recording)
	Backup Method	USB removable hard disk, USB disk
<b>Client</b>	PC	IE/ Easy VMS
	P2P	Support(IOS、 Android)
	Net Protocol	Support TCP/IP, IPv4, DHCP, NTP, RTSP, ONVIF, P2P, GB28181 and other network protocols
<b>Interface</b>	Video Output	1 VGA , 1 HDMI
	Video Input	16CH video input
	Network	1 RJ45 10 / 100M adaptive Ethernet interface
	USB Interface	2USB 2.0 port
	SATA Interface	1 SATA 2.0 Port, Max support 8TB HDD
<b>Other</b>	PTZ Control	Control the front-end camera with PTZ device through the network
	ONVIF	Support
	Power Supply	PoE 52V/4A
	working Environment	-10°C ~ +50°C 10% ~ 95%RH



# 16 CH PoE NVR SPEC

## Interface Definition:



1	USB	2	HDMI	3	VGA
4	WAN Interface	5	PoE Port	6	Power Supply/ Power Switch
7	GND				

## Remarks:

The contents of this manual are only for the user to provide guidance. Our company will update the contents of this manual according to the enhancement or change of product features.

The software features described in this manual will be regularly updated and updated, and the updated content will be reflected in the new version of the manual without prior notice.