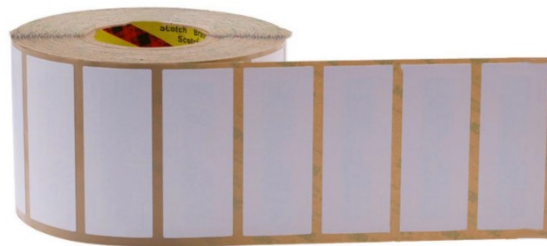




UHF windshield Sticker/ Lable

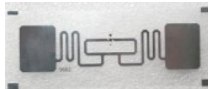
UHF windshield label / tear-proof and fragile electronic label vehicle access management label



| | |
|-----------------------|---|
| Material | Coated Paper or PET |
| Operating Frequency | FCC 902MHz~928MHz CE 865MHz~868MHz |
| Standard / Protocol | EPC CLASS1 GEN2/ ISO 18000-6C |
| Chip type | Alien H9 or other stock chips |
| Reading Distance | 1~20M (Depend on reader and environment) |
| Operating Temperature | -10°C to +85°C |
| Storage Temperature | -10°C to +85°C |
| Applications | Vehicle management, personnel management, etc |
| Data retention | 10(yrs) |
| Dimension | 110mm*45mm*0.3mm(customizes) |

UHF Headlight Sticker

Model : UHF9662S





- ◆ UHF 860 ~ 960MHZ
- ◆ 70*17mm, transparent with with [back side glue](#)

Model: UHF9640S



- ◆ UHF 860 ~ 960MHZ
- ◆ 98*12mm, transparent with [back side glue](#)



UHF PVC Card

UHF RFID UHF Smart Card for vehicle management, personnel management, warehouse manager ect.



| | |
|-----------------------|---|
| Material | PVC |
| Operating Frequency | 860~960MHz |
| Standard / Protocol | EPC CLASS1 GEN2/ ISO 18000-6C |
| Chip type | U8/U9 or other stock chips |
| Reading Distance | 1~20M (Depend on reader and environment) |
| Operating Temperature | -10°C to +85°C |
| Storage Temperature | -10°C to +50°C |
| Applications | Vehicle management, personnel management, etc |
| Data retention | 10(yrs) |
| Dimension | 86mm*54mm*0.78mm (standard) |
| Working mode | Read or write |
| Write distance | Depends on the chip type and reader |
| Package | 200pcs/box |
| Weight | 1.5kg/pcs |

UHF Tags/Keyfobs





| | |
|---------------------------------|------------------|
| Material : PVC | OEM : print logo |
| Colorful : Blue default ,others | Blank |

UHF License Plate



| | |
|-----------------------|-------------------------------|
| Material | ABS |
| Operating Frequency | 860~960MHz |
| Standard / Protocol | EPC CLASS1 GEN2/ ISO 18000-6C |
| Chip type | U8/U9/H9 or other stock chips |
| Working Mode | Read / Write |
| Reading Distance | 0-8m(Reader Depend On) |
| Writing Distance | 0-2m(Writer Depend On) |
| Size | 14cm / 24.5 cm |
| Package | 100pcs/Package |
| Operating Temperature | -40°C to +80°C |

Dual Frequency Card (UHF+EM / UHF+MIFARE)



| | |
|-----------------------|--|
| Material | PVC |
| Operating Frequency | 125Kzh+860~960MHz / 13.56Mhz+860~960MHz |
| Standard / Protocol | EPC CLASS1 GEN2/ ISO 18000-6C |
| Working Mode | Read / Write |
| Size | 85*54mm |
| Package | 200pcs/Box |
| Operating Temperature | -40°C to +70°C |

Application :



Hotel



SuperMarket



Gym



Community



Repast



Parking



AccessControl



Hospital